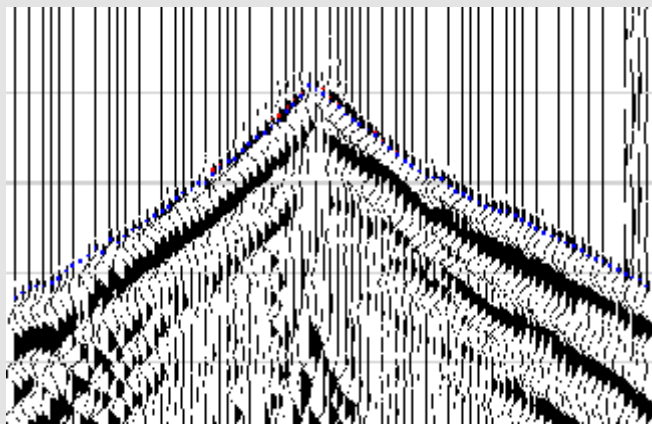


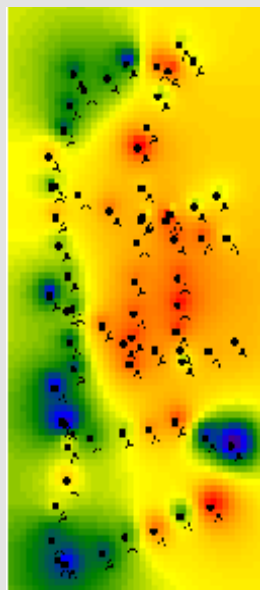
# Refraction/Tomo Statics

Serious problems due to complex near surface geology?

Let us do the job. Our statics solutions will solve such issues.



Thorough first break picking leads to accurate statics models and **enhanced imaging**



Include any kind of uphole, lvi or hds data into a **detailed  $v_0$  model**

Combine everything to a 3D subsurface model. That way you **avoid misties** even for 2D datasets.

